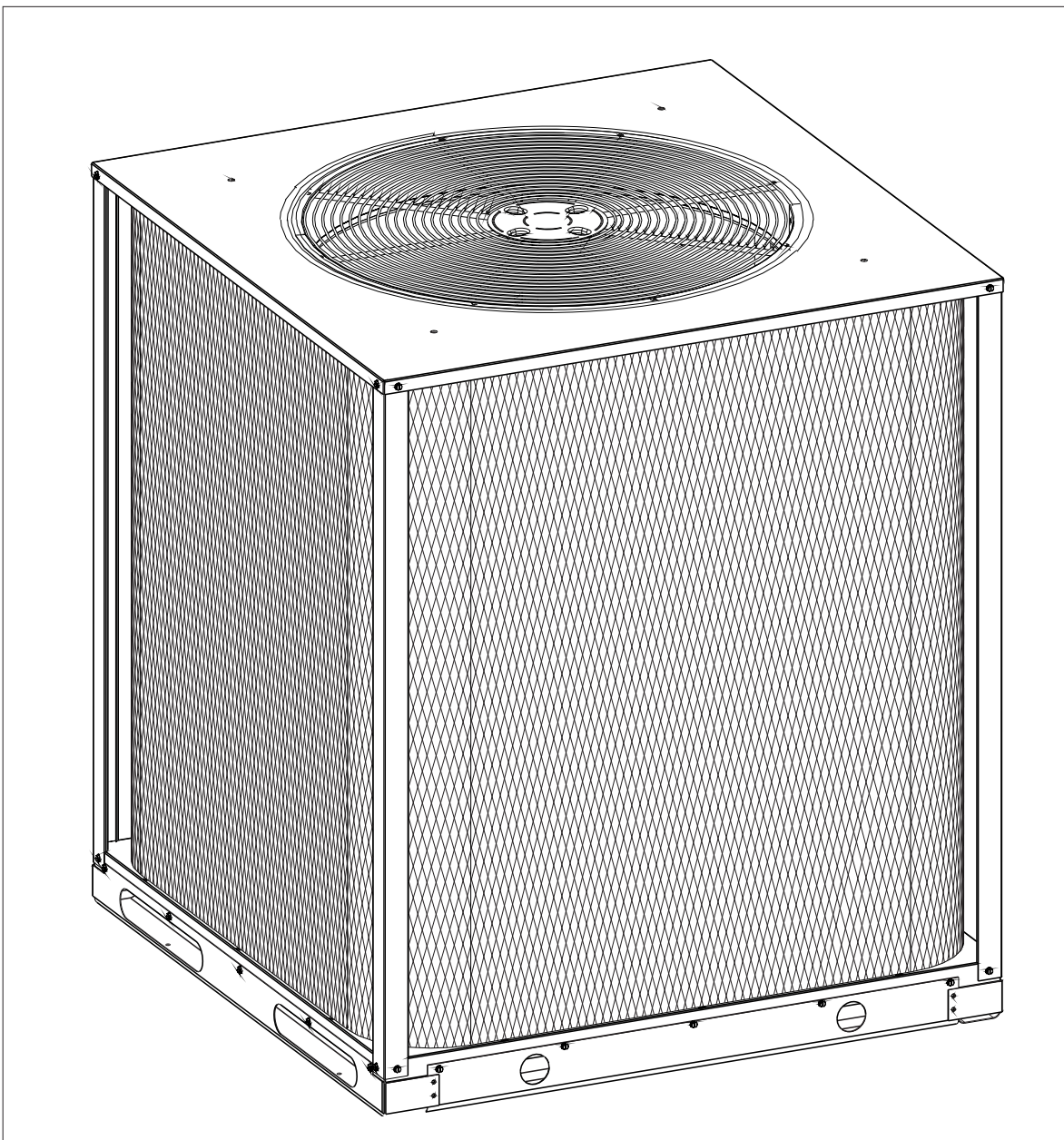


# Outdoor Air Conditioner

## User's Information and Installation Instructions

### S3BN Series High Efficiency Commercial Split System

These units have been designed and tested for capacity and efficiency in accordance with A.R.I. Standards. Split System Air Conditioner units are designed for use with a wide variety of fossil fuel furnaces, electric furnaces, air handlers, and evaporator coil combinations.



These instructions are primarily intended to assist qualified individuals experienced in the proper installation of heating and/or air conditioning appliances. Some local codes require licensed installation/service personnel for this type of equipment. Read all instructions carefully before starting the installation.

---

## USER'S INFORMATION

### IMPORTANT

Read this owner information to become familiar with the capabilities and use of your appliance. Keep this with literature on other appliances where you have easy access to it in the future. If a problem occurs, check the instructions and follow recommendations given. If these suggestions don't eliminate your problem, call your servicing contractor.

## OPERATING INSTRUCTIONS

### To Operate Your Air Conditioner for Cooling —

1. Set the thermostat system switch to COOL or AUTO and the thermostat fan switch to AUTO. (See Figure 1)
2. Set the thermostat temperature to the desired temperature level by pressing the WARMER or COOLER button. Please refer to the separate detailed thermostat user's manual for complete instructions regarding thermostat programming. The outdoor unit and indoor blower will both cycle on and off to maintain the indoor temperature at the desired cooling level.

### To Operate Your Furnace for Heating —

1. Set the thermostat system switch to HEAT or AUTO and the thermostat fan switch to AUTO. (See Figure 1)
2. Set the thermostat temperature to the desired temperature level by pressing the WARMER or COOLER button. Please refer to the separate detailed user's manual for complete thermostat programming instructions. The furnace and indoor blower will cycle on and off to maintain the indoor temperature at the desired heating level.

### To Shut Off Your Air Conditioner —

Set the thermostat system switch to OFF and the thermostat fan switch to AUTO. (See Figure 1). The system will not operate, regardless of the thermostat temperature setting.

### To Operate the Indoor Blower Continuously —

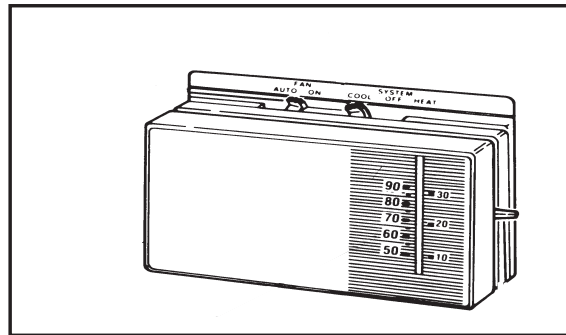


Figure 1. Typical Thermostat

Set the thermostat fan switch to ON (See Figure 1). The indoor blower will start immediately, and will run continually until the fan switch is reset to AUTO.

The continuous indoor blower operation can be obtained with the thermostat system switch set in any position, including OFF.

The continuous indoor blower operation is typically used to circulate the indoor air to equalize a temperature unbalance due to a sun load, cooking, or fireplace operation.

### To Maintain Your Air Conditioner —



## CAUTION:

**Be certain the electrical power to the outdoor unit and the furnace/air handler is disconnected before doing the following recommended maintenance.**

1. **Regularly:**
  - a. Clean or replace the indoor air filter at the start of each heating and cooling season, and when an accumulation of dust and dirt is visible on the air filter.
  - b. Remove any leaves and grass clippings from the coil in the outdoor unit, being careful not to damage the aluminum fins.



## CAUTION:

---

**Do not over-oil, or oil motors not factory-equipped with oil tubes. The compressor is hermetically “sealed” and does not require lubrication.**

---

- c. Check for any obstructions, such as twigs, sticks, etc.
- 2. Before Each Cooling Season:**

If the furnace/air handler blower motor and the outdoor unit fan motor(s) have oil tubes at the motor bearings, apply 10 drops of SAE No. 20 motor oil to each oil tube.
- 3. Before Calling a Service Technician, Be Certain:**
  - a. The unit thermostat is properly set — see “To Operate Your Air Conditioner for Cooling” and “To Operate Your Furnace for Heating.”
  - b. The unit disconnect fuses are in good condition, and the electrical power to the unit is turned on.

### 1. GENERAL INFORMATION

Read the following instructions completely before performing the installation.

**Condensing Unit Section** — Each condensing unit is shipped with a refrigerant holding charge adequate to maintain a positive pressure to keep out contaminants.

**NOTE:** DO NOT USE ANY PORTION OF THE CHARGE FOR PURGING OR LEAK TESTING.

**Liquid and Suction Lines** — Refrigerant grade copper tubing should be used when installing the system. Refrigerant suction line tubing should be fully insulated.

When condensing unit is matched with two air handlers (two coils) or a dual circuited evaporator coil, refrigerant tubing should be branched between both evaporator coils or circuits using equal lengths of tubing to maintain equal evaporator/circuit performance.

### Field Connections for Electrical Power Supply

— All wiring must comply with current provisions of the “National Electrical Code” (ANSI C1.) and with applicable local codes having jurisdiction. The minimum size of electrical conductors and circuit protection must be in compliance with information listed on the outdoor unit data label.

### 2. SAFETY CONSIDERATIONS

**Pressures within the System** — Split system air conditioning equipment contains liquid and gaseous refrigerant under pressure. Installation and servicing of this equipment should be accomplished by qualified, trained personnel thoroughly familiar with this type of equipment. Under no circumstances should non-qualified personnel attempt to install and/or service the equipment.

**Labels, Tags, Precautions** — When working with this equipment, follow all precautions in the literature, on tags, and on labels provided with the equipment. Read and thoroughly understand the instructions provided with the equipment prior to performing the installation and operational checkout of the equipment.

**Brazing Operations** — Installation of equipment may require brazing operations. Safety codes must be complied with. Safety equipment (e.g.; safety glasses, work gloves, fire extinguisher, etc.) must be used when performing brazing operations.



## CAUTION:

---

**Ensure all electrical power to the unit is off prior to installing or servicing the equipment. Failure to do so may cause personal injury or death.**

---

### 3. SITE PREPARATION

**Unpacking Equipment** — Remove the cardboard carton and User’s Manual from the equipment. Take care not to damage the tubing connections when removing the carton.

**Inspect for Damage** — Inspect the equipment for damage prior to installing the equipment at

the job site. Ensure coil fins are straight and, if necessary, comb fins to remove flattened and bent fins.

**Preferred Location of the Outdoor Unit at Job Site** — Conduct a survey of the job site to determine the optimum location for mounting the outdoor unit. Overhead obstructions, poorly ventilated areas, and areas subject to accumulation of debris should be avoided. The outdoor unit should be installed no closer than 18 inches from the outside walls of the facility and in an area free from overhead obstructions to ensure unrestricted airflow through the outdoor unit.

**Facility Prerequisites** — Electrical power must be supplied to the equipment. Electrical power supplied must be adequate for proper operation of the equipment. The system must be wired and provided with circuit protection in accordance with local building codes and the National Electrical Code.

**Minimum Circuit Ampacity** — Electrical wiring to the equipment must be compatible and in compliance with the minimum circuit ampacity listed on the outdoor unit data label.

**Maximum Fuse/Circuit Breaker Size** — Circuit protection for the outdoor unit must be compatible with the maximum fuse/circuit breaker size listed on the outdoor unit data label.

## 4. INSTALLING THE OUTDOOR UNIT

**Slab Mount** — The site selected for a slab mount installation requires a stable foundation and one not subject to erosion. The slab should be level and anchored (if necessary) prior to placing the equipment on the slab.

**Cantilever Mount** — The cantilever mount should be designed with adequate safety factor to support the weight of the equipment, and for loads subjected to the mount during operation. Installed equipment should be adequately secured to the cantilever mount and levelled prior to operation of the equipment.

**Roof Mount** — The method of mounting should be designed so as not to overload roof structures nor transmit noise to the interior of the structure. Refrigerant and electrical line should be routed

through suitably waterproofed openings to prevent water leaking into the structure.



## WARNING:

---

**To avoid the risk of property damage or personal injury, it is the rigger's responsibility to ensure that whatever means are used to hoist the unit are safe and adequate.**

---

## 5. INSTALLING THE INDOOR UNIT

The indoor section should be installed before proceeding with routing of refrigerant piping. Consult the installation instructions of the indoor unit (i.e.: air handler, furnace, etc.) for details regarding installation.

## 6. CONNECTING REFRIGERANT TUBING BETWEEN THE INDOOR AND OUTDOOR UNIT

**General** — Once outdoor and indoor unit placement has been determined, route refrigerant tubing between the equipment in accordance with sound installation practices. Refrigerant tubing should be routed in a manner that minimizes the length of tubing and the number of bends in the tubing. Refrigerant tubing should be supported in a manner that the tubing will not vibrate or abrade during system operation. Tubing should be kept clean of foreign debris during installation. Every effort should be made by the installer to ensure that the field installed refrigerant containing components of the system have been installed in accordance with these instructions and sound installation practices so as to insure reliable system operation and longevity. The maximum recommended interconnecting refrigerant line length is 75 feet, and the vertical elevation difference between the indoor and outdoor sections should not exceed 20 feet.

**Optional Equipment** — Optional equipment (e.g.: liquid line solenoid valves, twinning kit, low ambient, etc.) should be installed in strict accordance with the manufacturer's installation instructions.

## 7. MAKING ELECTRICAL CONNECTIONS

---

**WARNING:**

---

Turn off all electrical power at the main circuit box before wiring electrical power to the outdoor unit. Failure to comply may cause severe personnel injury or death.

**Wiring Diagram/Schematic** — A wiring diagram/schematic is located on the inside cover of the electrical box of the outdoor unit. The installer should become familiar with the wiring diagram/schematic before making any electrical connections to the outdoor unit.

**Outdoor Unit Connections** — The outdoor unit requires both power and control circuit electrical connections. Refer to the unit wiring diagram/schematic for identification and location of outdoor unit field wiring interfaces.

**Supply Control Circuit Wiring** — The outdoor unit is equipped with a 24 VAC Class II transformer for low voltage circuit control. Control circuit wiring must comply with the current provisions of the “National Electrical Code” (ANSI C1.) and with applicable local codes having jurisdiction. When using two air handlers, a twinning kit (917453) is required for proper low voltage control wiring.

Units are shipped factory wired for 240 or 460 volt operation (see unit data label for proper incoming field wiring). For 208 volt operation, remove the lead from the transformer terminal marked 240V (on 208-230 models only) and connect it to the terminal marked 208V. For maximum circuit ampacity and maximum overcurrent protection, see the unit rating plate.

**Thermostat Connections** — Thermostat connections should be made in accordance with the instructions supplied with the thermostat, and with the instructions supplied with the indoor equipment.

---

**WARNING:**

---

To avoid the risk of electrical shock, personal injury, or death, disconnect all electrical power to the unit before performing any maintenance or service.

---

**WARNING:**

---

The unit cabinet must have an uninterrupted or unbroken electrical ground to minimize personal injury if an electrical fault should occur. This ground may consist of electrical wire or approved conduit when installed in accordance with existing national or local codes.

### Electrical Power Wiring:

**General** — Electrical power wiring must be made in accordance with all applicable local codes and ordinances, and with the current revision of the National Electric Code NFPA 70 or in Canada CSA C.22.1 Canadian Electrical Code Part 1. If any of the original wire as supplied with the unit must be replaced, it must be replaced with material of the same gauge and temperature rating.

**Line Voltage** — Before proceeding with the electrical connections, make certain that the voltage, frequency and phase of the supply source are the same as those specified on the unit rating plate. Also verify that the service provided by the utility is sufficient to handle the additional load imposed by this equipment.

This unit must be electrically grounded in accordance with local codes or, in the absence of local codes, with the National Electrical Code (ANSI/NFPA 70) or the CSA C22.1 Electrical Code.

See the unit wiring label for proper high and low voltage wiring. Make all electrical connections in accordance with all applicable codes and ordinances.

Use a separate branch electrical circuit for this unit. A means of electrical disconnect must be located within sight of and readily accessible to the unit.

Overcurrent protection must be provided at the branch circuit distribution panel and sized as shown on the unit rating label and according to the National Electric Code and applicable local codes.

Provide power supply for the unit in accordance with the unit wiring diagram, and the unit rating plate. Connect the line-voltage leads to the terminals on the contactor inside the control compartment. Use only copper wire for the line voltage power supply to this unit. Use proper code agency listed conduit and a conduit connector for connecting the supply wires to the unit. Proper grounding is accomplished by using the grounding lug provided in the control box.

**Disconnect Switch** — An electrically compatible disconnect switch must be within line of sight of the outdoor unit. This switch shall be capable of electrically de-energizing the outdoor unit.

**Optional Equipment** — Optional equipment requiring connection to the power or control circuits must be wired in strict accordance with current provisions of the “National Electrical Code” (ANSI C1.), with applicable local codes having jurisdiction, and the installation instructions provided with the equipment. Optional Equipment (e.g.: liquid line solenoid valves, twinning kit, low ambient, etc.) should be installed in strict accordance with the manufacturer’s installation instructions.

## 8. STARTUP AND CHECKOUT

**Air Filters** — Ensure air filters are clean and in place prior to operating the equipment.



### **WARNING:**

**Ensure electrical power to the unit is off prior to performing the following steps. Failure to do so may cause personal injury or death.**

---

**Thermostat** — Set the room thermostat function switch to OFF, fan switch to AUTO, and move temperature setpoint to its highest setting.

Prior to applying electrical power to the outdoor unit, ensure that the unit has been properly and securely grounded, and that power supply connections have been made at both the facility power interface and outdoor unit.

**Outdoor Unit** — Ensure the outdoor coil and top of the unit are free from obstructions and debris, and all equipment access/control panels are in place.

Using extreme caution, apply power to the unit and inspect the wiring for evidence of open, shorted, and/or improperly wired circuits.

### **Functional Checkout:**

**Indoor Blower** — Set the thermostat fan switch to ON. Verify that the indoor blower is operating and that airflow is not restricted. Set the fan switch back to AUTO.



### **CAUTION:**

**If equipped with a compressor crankcase heater, wait 24 hours prior to performing a function checkout to allow for heating of the compressor crankcase. Failure to comply may result in damage and could cause premature failure of the system.**

---

**Cooling** — Set the thermostat system switch to “Cool” and the thermostat fan switch to “Auto.” Lower the thermostat temperature switch below room temperature and ensure unit refrigerant pressures are in order.

**NOTE:** *If refrigerant pressures are abnormal, compressor may be rotating in the opposite direction. Shut off main power to the unit and switch any two field wires at the disconnect. **DO NOT** alter unit wiring. Listen for any unusual noises. Locate the source and correct as needed.*

After allowing the unit to run for several minutes, set the temperature selector above room temperature, verify that the fan, blower, and compressor cycle off with the thermostat.

**Short Cycle Protection** — With the system operating in COOLING mode, note the setpoint temperature setting of the thermostat, and gradually raise the setpoint temperature until the outdoor unit and indoor blower de-energize. Immediately lower the setpoint temperature of the thermostat to its original setting and verify that the indoor blower is energized and that the outdoor unit remains de-energized. Verify that, after approximately 5 minutes, the outdoor unit energizes and that the temperature of the air supplied to the facility is cooler than ambient temperature.

**Heating** — If provided with heating equipment, lower the thermostat setpoint temperature to the lowest obtainable setting and set the thermostat function switch to HEATING. The indoor blower and outdoor unit should stop running. Increase the setpoint temperature of the thermostat to the maximum setting. Verify that the heating equipment has been energized (i.e., fossil fuel burner operating, etc.) and that the indoor blower energizes after a short period of time. Feel the air being circulated by the indoor blower and verify that it is warmer than ambient temperature. Listen for any unusual noises. If present, locate and determine the source of the noise and correct as necessary.

**NOTE:** Other sources for heating (i.e.: electric furnace, fossil fuel furnace, air handler with electric heat options, etc.) that interface with the heat pump should be functionally checked to verify system operation and compatibility with the heat pump. Refer to the installation instructions for this equipment and perform a functional checkout in accordance with the manufacturer's instructions.

## Adjustment of Refrigerant Charge:



### CAUTION:

---

**Split system air conditioning equipment contains liquid and gaseous refrigerant under pressure. Adjustment of refrigerant charge should only be attempted by qualified, trained personnel thoroughly familiar with the equipment. Under no circumstances should the homeowner attempt to install and/or service this equipment. Failure to comply with this warning could result in equipment damage, personal injury, or death.**

---

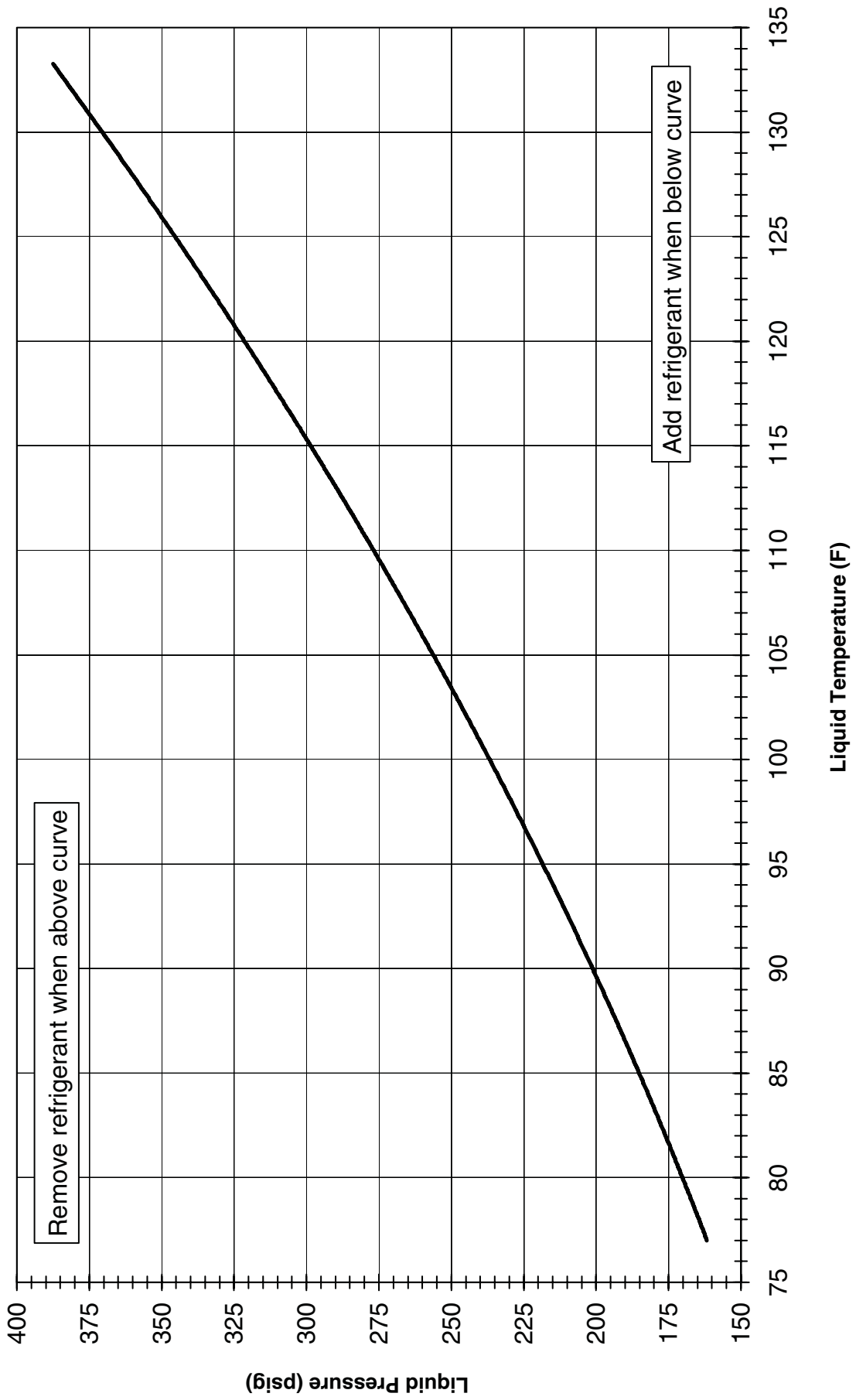
**NOTE:** The following Refrigerant Charging Charts are applicable to matched assemblies of our equipment and at listed airflows for the indoor coil. Assemblies of indoor coils and outdoor units not listed are not recommended and deviations from rated airflows or non-listed equipment combinations may require modifications to the expansion device(s) and refrigerant charging procedures for proper and efficient system operation.

**Refrigerant Charging Chart** — Refer to Refrigerant Charging Charts for correct system charging.

**Optional Equipment** — A functional checkout should be performed in accordance with the checkout procedures supplied with the equipment.

# Refrigerant Charging Charts

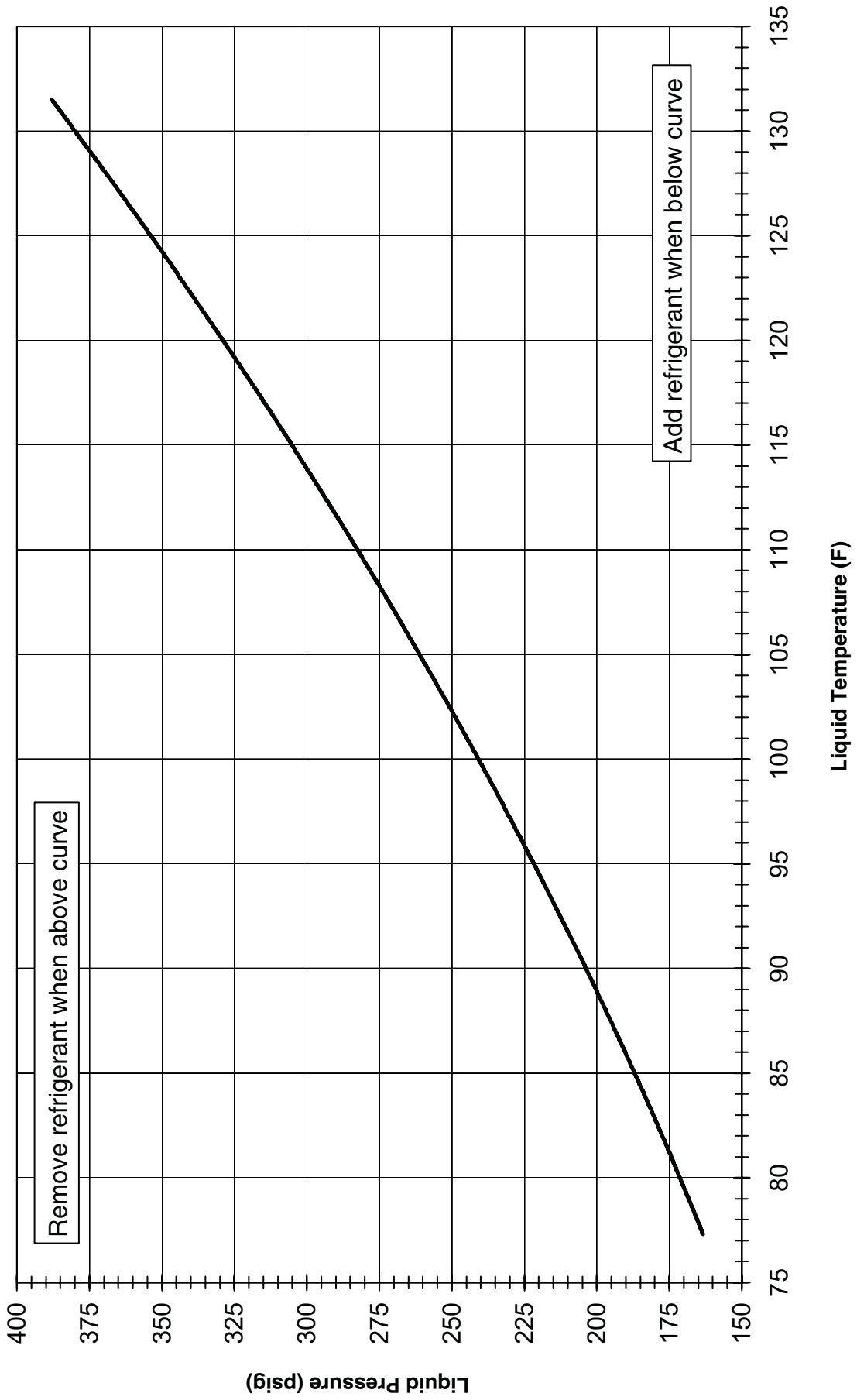
## 7.5 Ton AC TXV Charging Chart





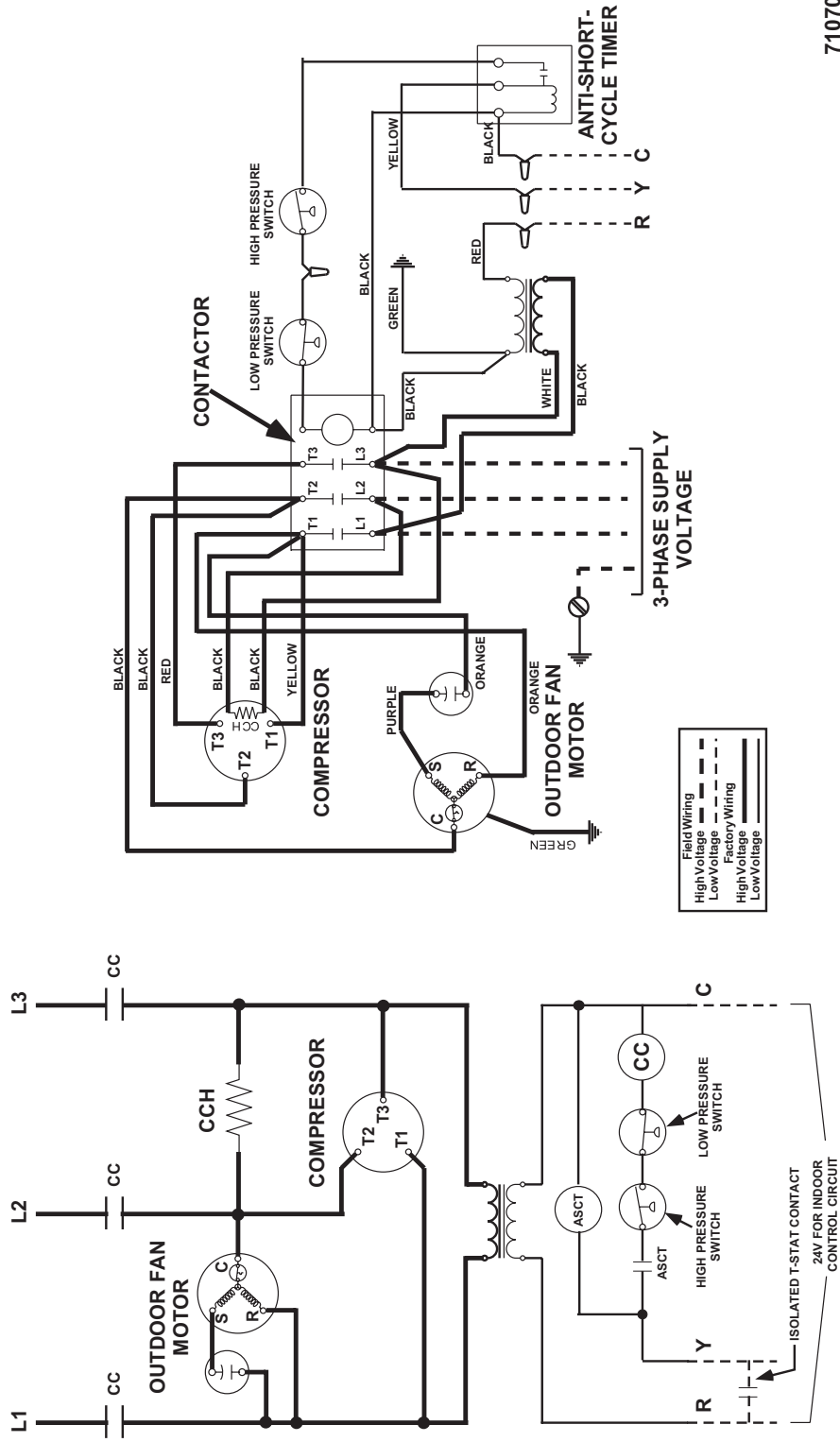
# Refrigerant Charging Charts

## 10 Ton AC TXV Charging Chart



- 1) Couper le courant avant de faire leretien.
- 2) Employez uniquement des conducteurs en cuivre.

- Notes:**
- 1) Disconnect all power before servicing.
  - 2) For supply connections use copper conductors only.
  - 3) Furnace/Air Handler w/factory equipped 24 V control circuit transformers, should be modified/rewired to ONLY use 24V transformer from outdoor section. See installation instructions for typical modifications.
  - 4) For replacement wires use conductors suitable for 105° C.
  - 5) For ampacities and overcurrent protection, see unit rating plate.



# PHYSICAL AND ELECTRICAL SPECIFICATIONS / OUTDOOR UNITS

## 10.3 EER —High Efficiency — Three Phase

Model No. S3BN-		090C	090W	120C	120W	
Electrical Data	Volts-Phase-Hz	280/230-3-60	460-3-60 380/420-3-50	280/230-3-60	460-3-60 380/420-3-50	
	Voltage Range (Min-Max)	187-253	414-506	187-253	414-506	
	Total Amps	32.1	16.4	33.4	17.2	
	Min Circuit Ampacity	41.4	21.7	43	22.7	
	Delay Fuse Max. (1)	60	35	70	35	
	Wire Size/Max Length (AWG 60°C Cu)	4/100	8/100	4/100	8/100	
	Wire Size/Max Length (AWG 75°C Cu)	6/100	8/100	4/100	8/100	
Component Data	Coil	Area (ft <sup>2</sup> )	31.94	31.94	31.94	31.94
		Rows-FPI	2-16	2-16	2-18	2-18
		Tube Dia.	3/8" OD	3/8" OD	3/8" OD	3/8" OD
	Fan Motor	Volts-Phase-Hz	280/230-3-60	460-3-60 380/420-3-50	280/230-3-60	460-3-60 380/420-3-50
		Qty	1	1	1	1
		Horsepower	3/4	3/4	3/4	3/4
		Full Load Amps	3.3	1.7	3.3	1.7
	Fan Blade	Dia./Pitch/#Blades	30/19/3	30/19/3	30/26/3	30/26/3
		RPM/CFM (Max-Total)	825/7500	825/7500	825/8500	825/8500
	Compressor Data	Volts-Phase-Hz	280/230-3-60	460-3-60	280/230-3-60	460-3-60
		Qty./Type	1 / Scroll	1 / Scroll	1 / Scroll	1 / Scroll
		RLA	28.8	14.7	30.1	15.5
		LRA	195	95	225	114
		Stages/Percent	1 / 100	1 / 100	1 / 100	1 / 100
		Crankcase Heater Qty./Type	1 / Band	1 / Band	1 / Band	1 / Band
	Refrigerant Suction Line-Length/O.D.	0 - 15 ft.	1 1/8"	1 1/8"	1 1/8"	1 1/8"
(Liq. Line All Lengths - 5/8" O.D.)	16 - 25 ft	1 3/8" (3)	1 3/8" (3)	1 3/8" (3)	1 3/8" (3)	
Circuits (Qty) - 1	26 - 75 ft.	1 3/8" (3)	1 3/8" (3)	1 3/8" (3)	1 3/8" (3)	
Refrigerant Charge	Holding	56	56	90	90	
	R-22 Ounces	Total System with 15' Line Set (2)				
		374	374	430	430	
Weight	Net	395	395	405	405	
	Approximate (lbs.)	Ship	407	407	417	417

- (1) HACR Type Circuit Breakers may be used.
- (2) Add 9.0 oz. of refrigerant per 5 feet of additional line set.
- (3) Requires a 1-3/8" to 1-1/8" reducer line to unit.

## ACCESSORIES — Condensing Unit

**Low Ambient Kit 913549A-** Maintains system pressures during low ambient conditions.

COPPER WIRE SIZE — AWG (1% Voltage Drop)				
Supply Wire Length-Feet				Supply Circuit
200	150	100	50	Ampacity
6	8	10	14	15
4	6	8	12	20
4	6	8	10	25
4	4	6	10	30
3	4	6	8	35
3	4	6	8	40
2	3	4	6	45
2	3	4	6	50
2	3	4	6	55
1	2	3	4	60

Wire Size based on N.E.C. for 60° type copper conductors.

**INSTALLER:  
PLEASE LEAVE THESE  
INSTALLATION INSTRUCTIONS  
WITH THE HOMEOWNER**



**7086190**



**7086190**

Specifications and illustrations subject to change  
without notice and without incurring obligations.  
Printed in U.S.A. (07/07)